

CLAPTRAP

Cosmic Lyman-Alpha Program for the
Tomographic Reconstruction of
Absorption Probes

Khee-Gan Lee (MPIA, Germany)

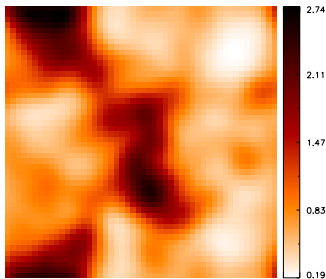
Deep + dense Ly α forest survey on
VLT-VIMOS

- ▶ $B < 24.5$ LBGs and QSOs
- ▶ Sightline densities of ~ 1000 per sq deg
($100\times$ BOSS)
- ▶ 3D Tomographic mapping of the $z \sim 2$
Ly α forest on $\sim 3 h^{-1}$ Mpc scales

Pilot program proposed for upcoming period
to cover 0.25 sq deg in COSMOS field

Right: $(100 h^{-1} \text{ Mpc})^2 \times 2 h^{-1} \text{ Mpc}$ sim slices

DM Distribution smoothed to $4 h^{-1} \text{ Mpc}$



Ly α forest absorption map from CLAPTRAP

